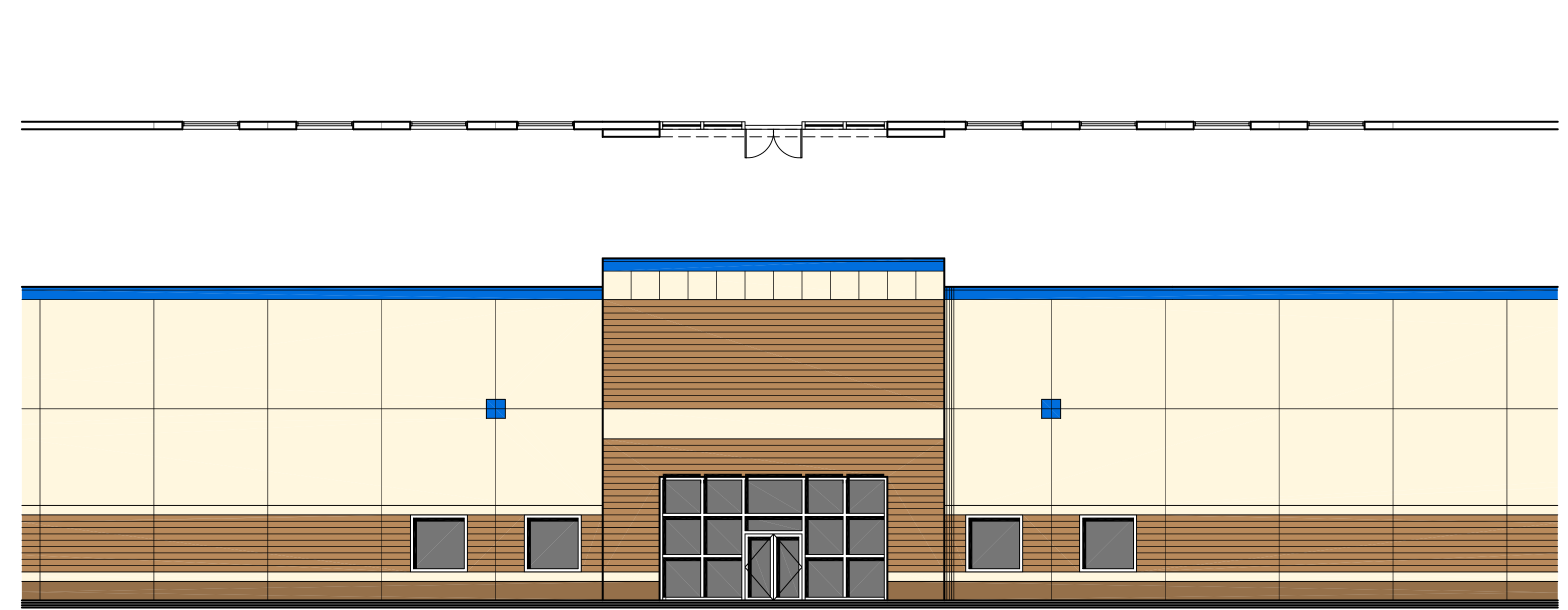
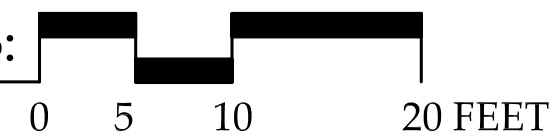
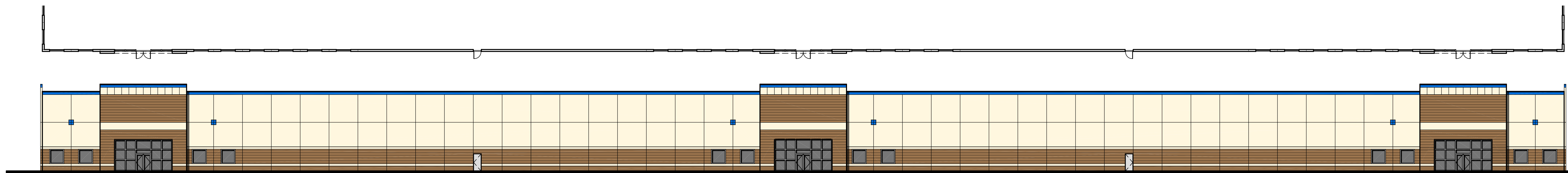
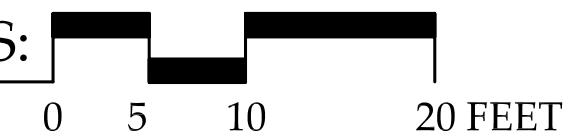


ENLARGED  
EXTERIOR ELEVATIONS:  
SCHEME #1



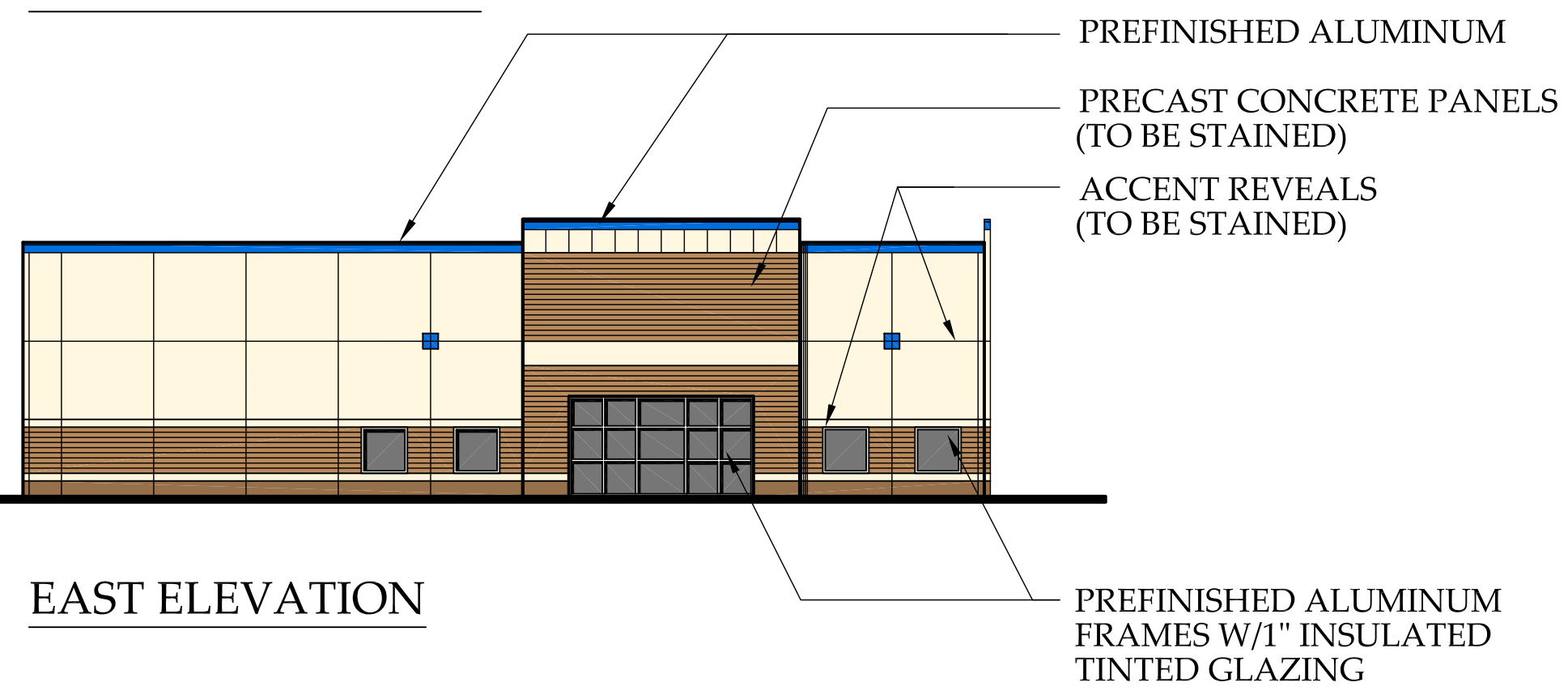
ENLARGED  
EXTERIOR ELEVATIONS:  
SCHEME #1



NORTH ELEVATION

T/PRECAST  
EL: = +36'-0"  
T/PRECAST  
EL: = +33'-0"

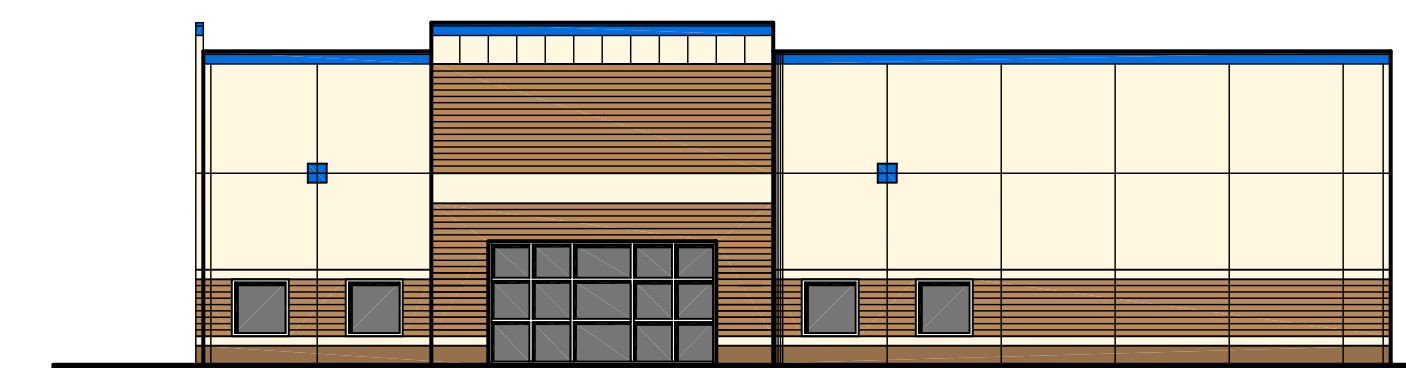
T/FIN. FLR.  
EL: = 0'-0"



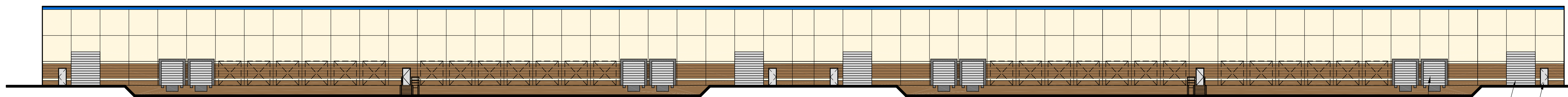
EAST ELEVATION

T/PRECAST  
EL: = +36'-0"  
T/PRECAST  
EL: = +33'-0"

T/FIN. FLR.  
EL: = 0'-0"



WEST ELEVATION



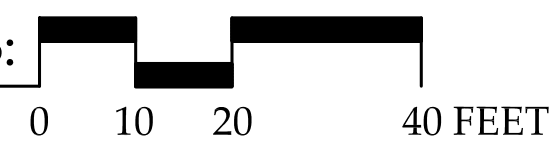
SOUTH ELEVATION

T/PRECAST  
EL: = +33'-0"

T/FIN. FLR.  
EL: = 0'-0"  
T/DOCK SLAB  
EL: = -4'-0"

INSULATED OVERHEAD DOOR  
W/DOCK EQUIPMENT  
INSULATED OVERHEAD DOOR  
HOLLOW METAL FRAME AND DOOR

EXTERIOR ELEVATIONS:  
SCHEME #1



# HALSTED PERSHING BUSINESS CENTER

CHICAGO, ILLINOIS

DAYTON STREET PARTNERS LLC

MAY 16, 2007 #05250